

MAX® Faceplates

The MAX series modular faceplates combine high capacity with aesthetic enhancements that provide a fresh new look to match today's technologies. The faceplate offers pressure-release designation label covers which eliminate the need for a probe-pic or screwdriver when installing faceplate labels. The faceplates are designed to be used with the angled or flat MAX modules, hybrid Z-MAX® outlets or TERA® outlets. Its durable finish masks minor scuffs that may occur during daily usage. The single gang faceplate can support up to six outlets and the double gang can support up to twelve outlets.

Quick Identification

Color-coded icons allow users to instantly identify different types of devices or applications

Variety

Faceplates available in black, white, gray, ivory, light ivory, and stainless steel

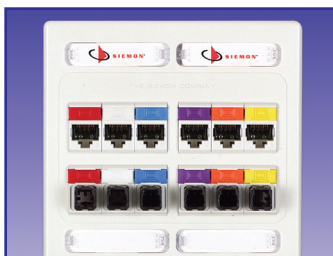
Labels

Sheets of designation labels can be ordered for use with standard printers



Installation Flexibility

MAX, Z-MAX or TERA outlets can be installed from front or rear of faceplate.



Superior Density

Fits up to 6 outlets in a single gang or 12 in a double gang faceplate.



Labeling

Faceplates include pressure-release designation label covers for quick, tool-less removal.

Product Information

10G MAX® Faceplates

10G MAX Faceplates are required for Z-MAX 6A UTP installations. Isolated port spacing ensures proper Alien Crosstalk performance. Faceplates include designation labels, clear label covers, and mounting screws.

10GMX-FP(XXX)-(XX)	
No. of MAX Modules	Faceplate Color
S02 = Two (Single Gang)	01 = Black
S04 = Four (Single Gang)	02 = White
D06 = Six (Double Gang)	20 = Ivory
D08 = Eight (Double Gang)	80 = Light Ivory



Add "B" to end of part number for bulk project pack of 100 faceplates.

MAX Faceplates

Faceplates include designation labels, clear label covers, and mounting screws.

MX-FP-S-(XX)-(XX) Single Gang

Ports	Faceplate Color
01 = 1 Port	01 = Black
02 = 2 Ports	02 = White
03 = 3 Ports	04 = Gray
04 = 4 Ports	20 = Ivory
06 = 6 Ports	80 = Light Ivory



MX-FP-D-(XX)-(XX) Double Gang

Ports	Faceplate Color
06 = 6 Ports	01 = Black
08 = 8 Ports	02 = White
12 = 12 Ports	04 = Gray
	20 = Ivory
	80 = Light Ivory



Add "B" to end of part number for bulk project pack of 100 faceplates.*

* Black and gray color options and bulk project packs available for single gang faceplates only.

MAX Stainless Steel Faceplates

Single and double gang stainless steel MAX faceplates for use with flat and angled MAX, hybrid Z-MAX or TERA outlets. Brushed finish on plates mask minor scratches and scuffs that may occur during day-to-day usage.

MX-FP-S-(XX)-SS-(XX) Single Gang

Ports	Label Options
01 = 1 Port	L = Label Holder
02 = 2 Ports	Blank = No Labels or Holder
03 = 3 Ports	
04 = 4 Ports	
06 = 6 Ports	



MX-FP-D-(XX)-SS-(XX) Double Gang

Ports	Label Options
06 = 6 Ports	L = Label Holder
08 = 8 Ports	Blank = No Labels or Holder
12 = 12 Ports	



10G MAX Horizontal Faceplates

Siemon's 10G single gang horizontal faceplate for Z-MAX®, TERA or MAX modules

10GMX-HFP-(XX)-(XX)

Ports	Faceplate Color
02 = 2 Ports	02 = White
03 = 3 Ports	20 = Ivory
04 = 4 Ports	80 = Light Ivory



Add "B" to end of part number for bulk project pack of 100 faceplates.

MAX Horizontal Faceplates

Siemon's single gang horizontal faceplate for Z-MAX, TERA or MAX modules

MX-HFP-(XX)-(XX)

Ports	Faceplate Color
01 = 1 Port	02 = White
02 = 2 Ports	20 = Ivory
03 = 3 Ports	80 = Light Ivory
04 = 4 Ports	



Note: Screws, designation label and clear label cover included.

Product Information

Universal Modular Furniture Adapter

Part Number Description

CT-UMA-(XX) CT® Universal Modular Furniture Adapter, Accepts (1) CT Coupler. Includes faceplate, mounting frame, label and clear label holder



Part Number Description

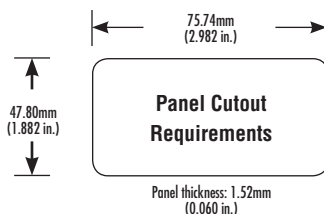
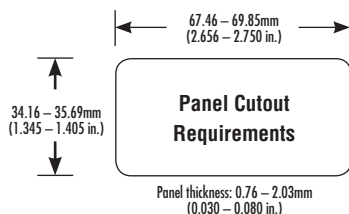
MX-UMA-(XX)..... MAX Universal Modular Furniture Adapter, Accepts (4) MAX®, Z-MAX® or TERA® outlets. Includes faceplate, mounting frame, label and clear label holder



Use (XX) to specify color: 01 = black, 02 = white, 04 = gray, 20 = ivory, 80 = light ivory

MAX® Modular Furniture Adapter

The MAX modular furniture adapters will accept four Z-MAX hybrid outlets, MAX angled or flat modules and snaps directly into communication outlet openings* in most major modular furniture systems. Adapters include designation label and clear label cover to allow for circuit identification.



Part Number Description

MX-MFP-(XX) Modular furniture adapter for standard openings including Steelcase

Part Number Description

MX-MFP-HMA-(XX).. Modular furniture adapter for Herman Miller Action Office Series 2 and Ethospace base openings

Use (XX) to specify color:

01 = black, 02 = white, 04 = gray, 20 = ivory, 80 = light ivory

Use (XX) to specify color:

01 = black, 02 = white, 04 = gray, 20 = ivory

*Furniture outlet openings, panel thickness, and raceway clearance may vary. Please consult furniture manufacturer for actual dimensions to determine compatibility.



MAX Modular Furniture adapters mount into modular furniture openings, combining superior density with proper circuit designation.

MAX Tamper-Proof Faceplate

Simon's tamper-proof MAX faceplates provide a secure, low profile solution for mounting our complete line of MAX modules. The design features a one-piece base which accepts up to six angled MAX modules and is secured by a solid cover and a choice of tamper-proof star or standard slotted head screw. The base mounts to any standard North American single gang box.

Part Number Description

MX-TFP-S-06-(XX) ... 6-port single gang, tamper-proof faceplate for angled MAX modules

Use (XX) to specify color: 02 = white, 80 = light ivory

Faceplates include tamper-proof and standard #6-32x1 mounting screws and color-matching screw cover.

Note: Tamperproof faceplate is not compatible with Z-MAX® or TERA® outlets.



Wall Phone Faceplates

Part Number Description

WPJP Plastic Wall Phone Faceplate with 2-pair, 6-position USOC jack



Use (XX) to specify included module:

Z6 = category 6, Z-MAX, UTP, T568A/B

Z6A = category 6A, Z-MAX, UTP, T568A/B

Z6AS = category 6A, Z-MAX, Shielded, T568A/B

K6 = category 6, MAX, UTP, T568A/B

K5 = category 5e, MAX, UTP, T568A/B

Part Number Description

MX-WP-(XX)-SS MAX Series Stainless Steel Wall Phone Faceplate with keystone module included



Product Information

MAX® Duplex and Designer Faceplates

The MAX Duplex and Designer faceplates are designed for use with Siemon's MAX series mounting frames. They are ideal for today's small office, home office, or residential environment. Faceplates include designation labels and color-matching label covers for circuit identification.



DP-S-(XX)
Single gang,
Duplex faceplate



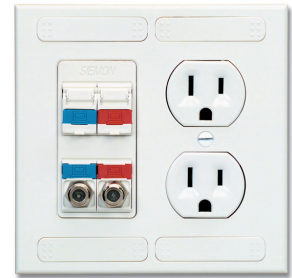
DR-S-(XX)
Single gang,
Designer faceplate



DRE-D-(XX)
Double gang
Designer/Duplex
faceplate



DR-D-(XX)
Double gang
Designer faceplate



Use (XX) to specify color: 02 = white, 20 = ivory, 25 = bright white, 80 = light ivory

MAX Mounting Frames

Siemon's MAX mounting frames provide a solution for installing MAX, Z-MAX® or TERA outlets in an environment where electrical Duplex or Designer style faceplates are desired. They are compatible with any Duplex or Designer style faceplate. The mounting ears can also be detached and used as spacers between the frames and mounting boxes.

Designer Mounting Frames



MX-D1Z-(XX)
Designer mounting
frame, accepts
one MAX or
Z-MAX outlets



MX-D2Z-(XX)
Designer mounting
frame, accepts two
MAX or Z-MAX
outlets



MX-D4Z-(XX)
Designer mounting
frame, accepts
four MAX or
Z-MAX outlets



MX-D6F-(XX)
Designer mounting
frame, accepts six
flat MAX or Z-MAX
outlets



Duplex Mounting Frames



MX-E2F-(XX)
Duplex mounting
frame, accepts
two flat MAX or
Z-MAX outlets



MX-E2A-(XX)
Duplex mounting
frame, accepts
two angled MAX
or Z-MAX outlets



MX-E4F-(XX)
Duplex mounting
frame, accepts
four flat MAX or
Z-MAX outlets



MX-E4A-(XX)
Duplex mounting
frame, accepts
four angled
MAX outlets



MX-D4F-15-(XX)
4-port MAX mounting frame
with HD15 female-female
adapter installed
MX-D4F-15E-(XX)
4-port MAX mounting frame,
HD15 cut-out, empty

Use (XX) to specify color: 02 = white, 04 = gray, 20 = ivory, 25 = bright white, 80 = light ivory

Because we continuously improve our products, Siemon reserves the right to change specifications and availability without prior notice.

North America

P: (1) 860 945 4200

Asia Pacific

P: (61) 2 8977 7500

Latin America

P: (571) 657 1950/51/52

Europe

P: (44) 0 1932 571771

China

P: (86) 215385 0303

India Middle East

P: (971) 4 3689743

Siemon Interconnect Solutions

P: (1) 860 945 4213
www.siemon.com/SIS